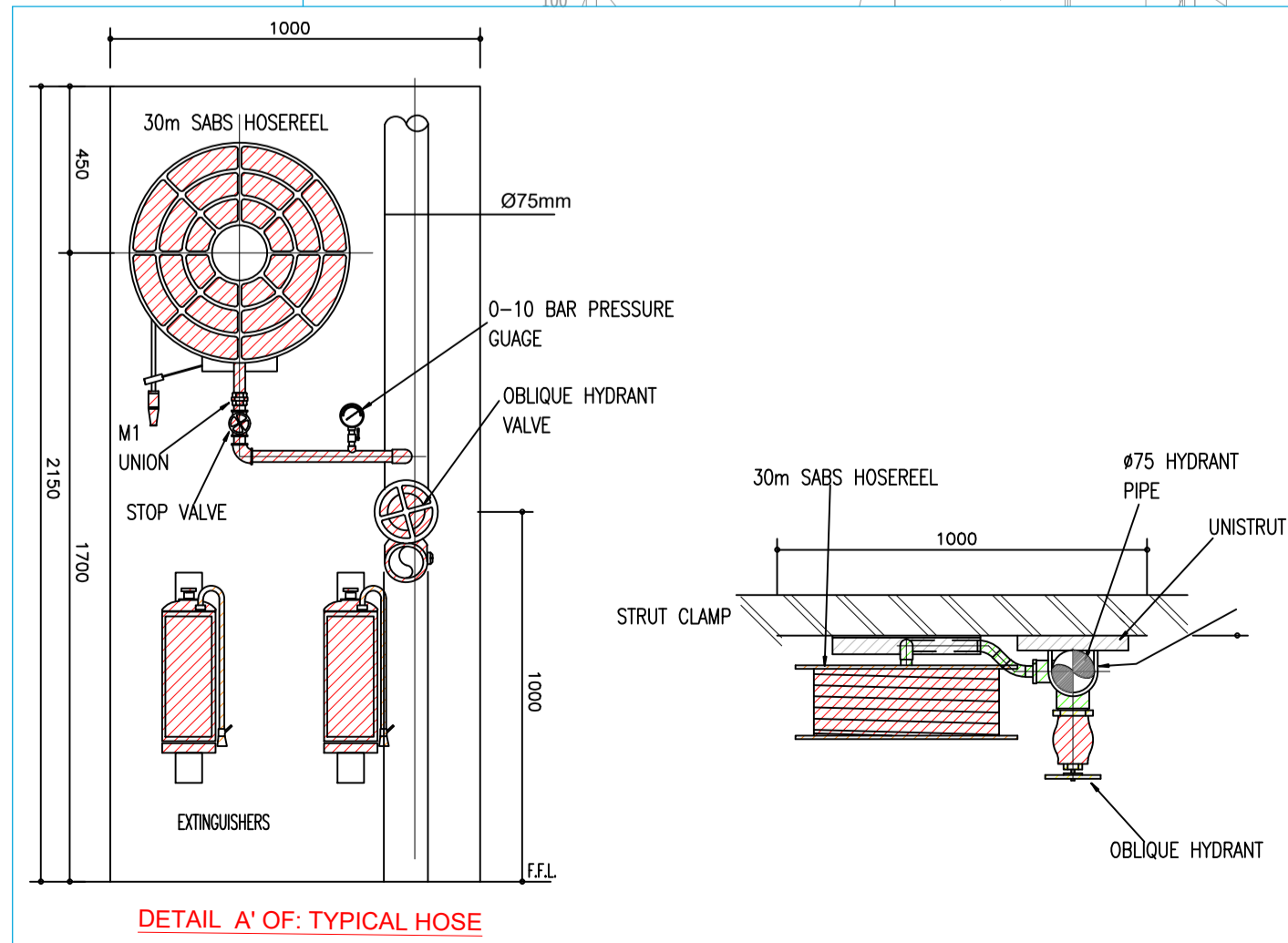
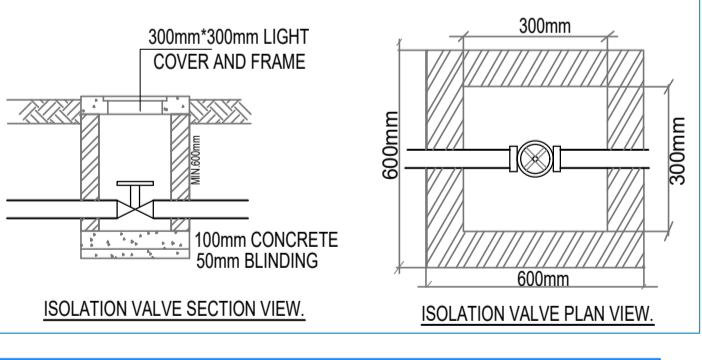
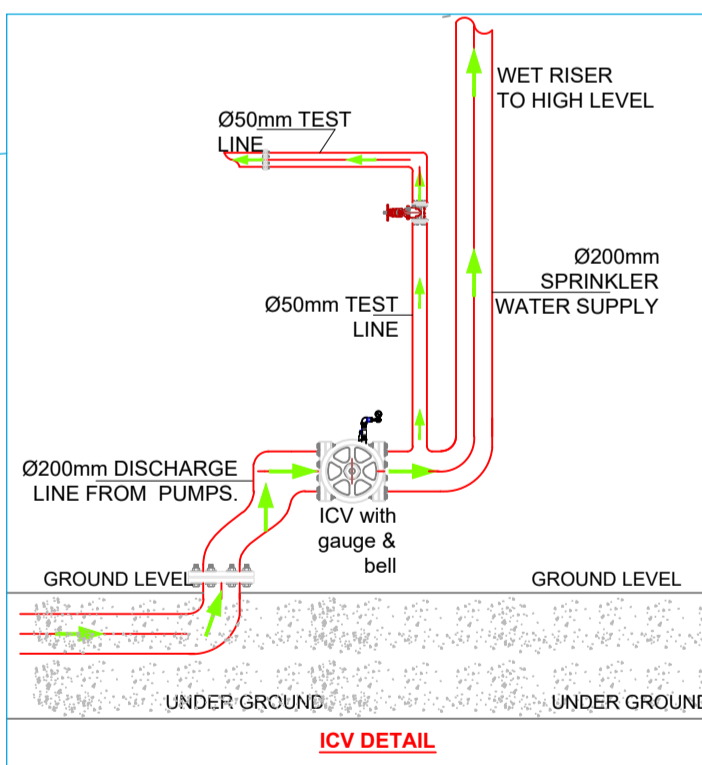


QUANTITIES	
No of Sprinkler heads	240
No of Hose reels	08
No of ICV's	01
No of Fire Hydrants	02



OFFICE BLOCK BOOSTER PUMP SET AND FIRE PUMP SETS SPECIFICATION					
Ref	Qty	Type	Capacity	Electrics	
Pressurized sprinkler Fire Pump set	1(Set)	ASIB Containerized Centrifugal Fire Pumpset as "Davron".	1PUMP = 2900/m ³ @ 80mHD.	ELECTRIC PUMP 75.0 KW, 3PHASE /50Hz/ 380V. DIESEL PUMP 66 KW, 3 PHASE. JOCKEY PUMP 1.1KW, 3PHASE, 380V 50Hz.	1. SUPPLY COMPLETE WITH: -100 LTRS PRESSURE VESSEL VFD TANK AS PER PUMP SPECIFICATIONS. -LOW LEVEL FLOAT CONTROL. -CONTROL PANEL WITH MANUAL / AUTO PUMP SELECTOR AND ALL PUMP STARTERS / CONTROLS. 2. MOUNT PUMPS ON 10mm THICK ANTI-VIBRATION RUBBER PADS. 3. PUMPS TO BE CONNECTED TO GENERATOR SET.

- GENERAL NOTES**
- THIS DRAWING IS TO BE READ IN CONJUNCTION WITH ALL RELEVANT ARCHITECTS' AND ENGINEERS' DRAWINGS
- USE ONLY APPROVED MILD STEEL FITTINGS.
 - ALL VALVES TO BE FIRE RATED GATE VALVES.
 - ALL EXTERNAL UNDERGROUND PIPES TO BE SCHED 40 MILD STEEL WRAPPED IN DENSO TAPE.
 - ALL EXTERNAL ABOVE GROUND PIPES TO BE SCHED 40 MILD STEEL WITH WELDED JOINTS.
 - ALL INTERNAL FIRE PIPES TO BE SCHED 40 MILD STEEL WITH WELDED JOINTS.
 - PIPES PASSING UNDER ROADWAYS AND FOOT PATHS TO BE INSTALLED IN CONCRETE CASING.
 - UNDERGROUND PIPES TO BE A MINIMUM OF 600mm BELOW GROUND LEVEL AND MARKED FOR EASE OF MAINTENANCE IN FUTURE.
- LEGEND**
- FH - FIRE HYDRANT
 - PRV - PRESSURE REDUCING VALVE
 - IV - ISOLATION VALVE
 - NRV - NON RETURN VALVE
 - HPBV - HIGH PRESSURE BALL VALVE
 - DR - DRY RISER
 - FTCP - FIRE TENDER CONNECTION POINT
 - BWS - BOREHOLE WATER SUPPLY
 - BWS - BOOSTED WATER SUPPLY
 - F/B - FROM BELOW
 - F/A - FROM ABOVE
 - T/B - TO BELOW



- LEGEND**
- Ø150mm FIRE WATER SUPPLY - - - - -
 - Ø100mm FIRE WATER SUPPLY - - - - -
 - Ø80mm FIRE WATER SUPPLY - - - - -
 - Ø65mm FIRE WATER SUPPLY - - - - -
 - Ø50mm FIRE WATER SUPPLY - - - - -
 - Ø40mm FIRE WATER SUPPLY - - - - -
 - Ø32mm FIRE WATER SUPPLY - - - - -
 - Ø25mm FIRE WATER SUPPLY - - - - -

REVISION NOTES

DATE	DESCRIPTION

DH ENGINEERING CONSULTANTS
 CONSULTING ENGINEERS AND PROJECT MANAGERS
 P.O. BOX 37928 TEL: +260 211 227176 FAX: 229555
 CELL: +260 977 874162/+260 955 913315/+260 962 220542
 Email: dh@ec.lusaka@gmail.com
 LUSAKA ZAMBIA

CLIENT
ZAMMSA
 PO BOX
 LUSAKA

PROJECT
**PROPOSED INSTALLATION OF THE
 FIREFIGHTING & DETECTION SYSTEM
 FOR ZAMMSA ON LOT**
 LUSAKA.

DESCRIPTION
**PROPOSED AUTOMATIC SPRINKLER
 & DETECTION SYSTEM LAYOUT.**

DATE JULY 2022	APPROVED BY D.G.H
DESIGNED BY M.C	SCALE 1: 120
DWG NO. DH...-2022-MSL-FWS01	

CONSULTANT PROJECT No.	DISCIPLINE	STATUS	REVISION
	MECH	S	

DRAWING STATUS CODES
 R - REPORT T - TENDER C - CONSTRUCTION
 P - PRELIMINARY S - SUBMISSION A - AS BUILT