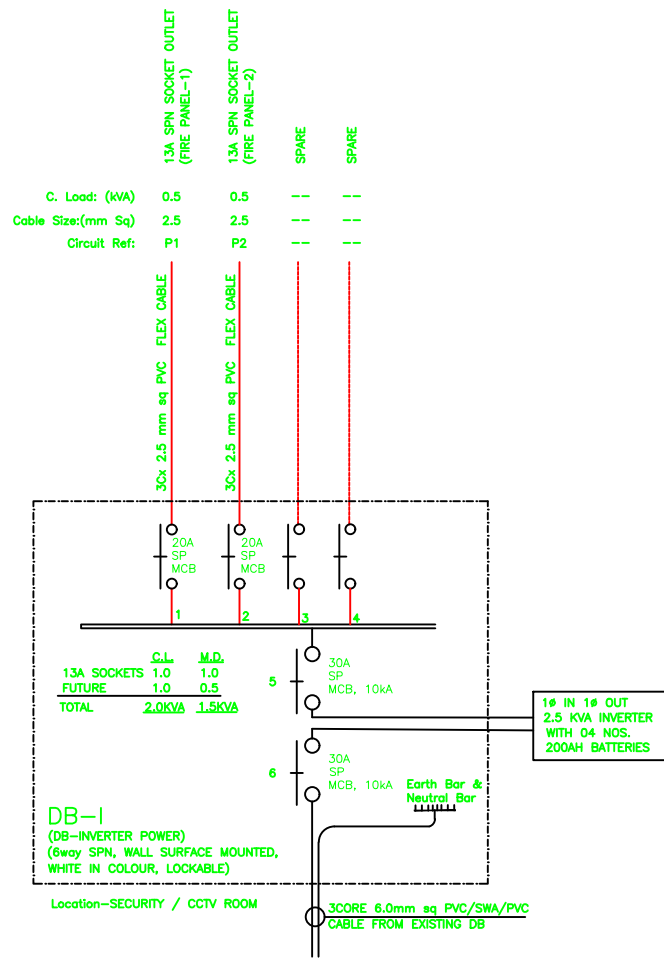
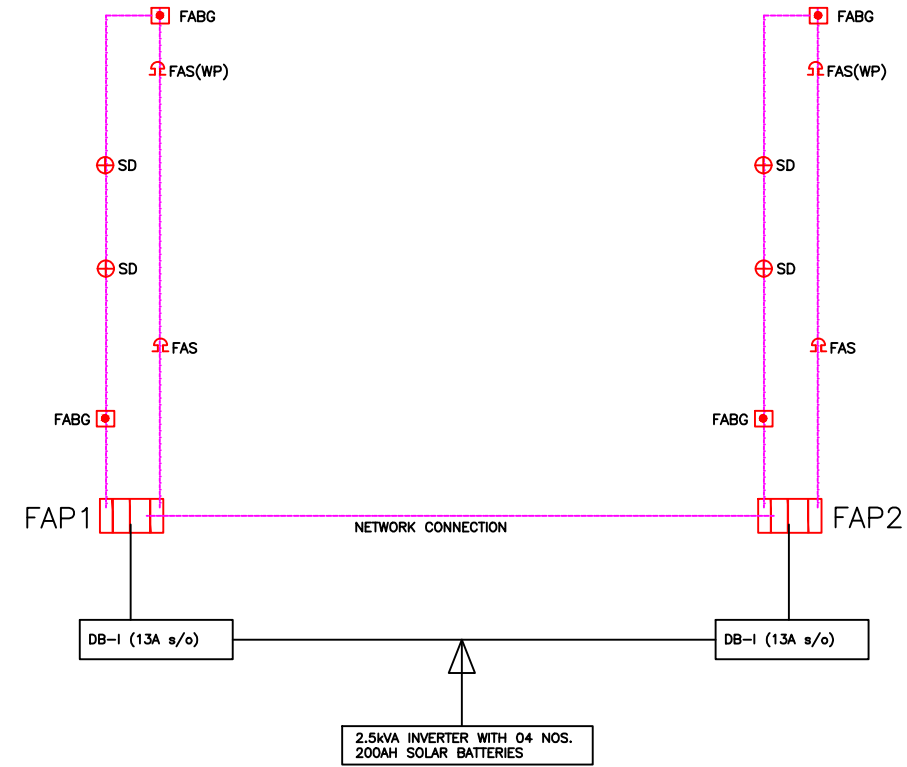


ELECTRICAL SCHEMATIC DIAGRAM FOR DISTRIBUTION BOARD- DB-FP



ELECTRICAL SCHEMATIC DIAGRAM FOR DISTRIBUTION BOARD- DB-I



GENERAL ARRANGEMENT FOR FIRE ALARM RETICULATION

LEGEND:

SCHEDULE OF ELECTRICAL FITTINGS (SMALL POWER)				
ITEM	SYMBOL	DESCRIPTION	MAKE	QTY.
1		13A SPN-E ANGLED SURFACE MOUNTED INDUSTRIAL SOCKET OUTLET C/W PLUG AND CONNECTOR, RED IN COLOUR.	'LEGRAND'	02
2		ELECTRICAL DISTRIBUTION BOARDS- DB-FP; DB-I	'DELTA'/EML	02
3				
4				
5				

CABLE SCHEDULE					
SCHEDULE OF POWER CABLES (c/w CABLE GLANDS & LUGS):					
ITEM	FROM	TO	CABLE SIZE & TYPE	MAKE	QTY.
01	EXISTING MDB	DB-FP	4 CORE 95mmSq PVC/SWA/PVC CABLE+ 35mm sq BCEC	ZAMEFA	150 MTRS (APPROX.)
02	DB-FP	FIRE PUMP	4 CORE 70mmSq PVC/SWA/PVC CABLE+ 25mm sq BCEC	ZAMEFA	25 MTRS
03	DB-FP	JOCKEY PUMP	4 CORE 2.5mmSq PVC/SWA/PVC CABLE+ 1.5mm sq BCEC	ZAMEFA	25 MTRS
04	EXISTING DB	DB-I	3 CORE 6mmSq PVC/SWA/PVC CABLE	ZAMEFA	25 MTRS (APPROX.)
05	DB-I	13A SPN S/O-1	3 CORE 2.5mmSq PVC/CU FLEXIBLE CABLE	ZAMEFA	10 MTRS
06	DB-I	13A SPN S/O-2	3 CORE 2.5mmSq PVC/CU FLEXIBLE CABLE	ZAMEFA	100 MTRS

- GENERAL NOTES
- THIS DRAWING IS TO BE READ IN CONJUNCTION WITH ALL RELEVANT ARCHITECTS' AND ENGINEERS' DRAWINGS
 - COPYRIGHT IS RESERVED. THIS DRAWING IS A LEGAL DOCUMENT INCLUDING ALL INFORMATION ATTACHED HEREWITH, UNLESS PERMITTED ALL INFORMATION SHALL BIND TO DH ENGINEERING CONSULTANTS LTD'S AUTHORITY.
 - THIS DRAWING IS TO BE READ IN CONJUNCTION WITH ALL RELEVANT ARCHITECTS' AND ENGINEERS' DRAWINGS.
 - ALL MATERIALS AND WORKMANSHIP TO BE TESTED AND APPROVED BY THE ENGINEERS IN COMPLIANCE WITH THE REGULATIONS BEFORE EXECUTION ON SITE. ANY QUERIES AND DISCREPANCIES TO BE REFERRED TO THE ENGINEER.
 - ALL CIRCUIT BREAKERS TO BE CBI-HYMAG/ MERLIN GERIN/ LEGRAND MAKE WITH REQUISITE SHORT CIRCUIT RATING

REVISION NOTES

DH ENGINEERING CONSULTANTS
 CONSULTING ENGINEERS AND PROJECT MANAGERS
 P.O. BOX 37928, TEL: +260 211 227176, FAX:229555
 CELL: +260 977 874162/+260 955 913315/+260 962 220542
 Email: dheng Lusaka@gmail.com
 LUSAKA ZAMBIA

CLIENT

PROJECT
 PROPOSED FIRE SPRINKLER SYSTEM AT MSL EXISTING WAREHOUSE LUSAKA .

DESCRIPTION
 PROPOSED ELECTRICAL SCHEMATIC DIAGRAM FOR DISTRIBUTION BOARD FOR FIRE PUMP-DB-FP; DB-I AND GENERAL ARRANGEMENT OF FIRE ALARM PANELS AND SCHEDULE OF FITTINGS

DATE: AUGUST 2020 APPROVED BY: D.G.H
 DESIGNED BY: Y.N.S SCALE: N.T.S.
 DWG NO.: DH27-2020-E02

CONSULTANT PROJECT No.	DISCIPLINE	STATUS	REVISION
	ELECT	S	A

DRAWING STATUS CODES
 R - REPORT T - TENDER C - CONSTRUCTION
 P - PRELIMINARY S - SUBMISSION A - AS BUILT