

LEGEND:

SCHEDULE OF CABLE TRAY DETAILS & CONDUITS				
ITEM	SYMBOL	DESCRIPTION	MAKE	QTY.
1		152x38mm Height MEDIUM DUTY PERFORATED CABLE TRAY C/W MOUNTING BRACKET & ACCESSORIES FOR ELECTRICAL CABLES	'CABSTRUT'	150MTR
2		76x38mm Height MEDIUM DUTY PERFORATED CABLE TRAY C/W MOUNTING BRACKET & ACCESSORIES FOR ELECTRICAL CABLES	'CABSTRUT'	--
3		152x38mm MEDIUM DUTY EXTERNAL/INTERNAL ELBOW FOR CABLE TRAY FOR ELECTRICAL CABLES	'CABSTRUT'	04NO.
4		76x38mm MEDIUM DUTY EXTERNAL/INTERNAL ELBOW FOR CABLE TRAY FOR ELECTRICAL/ TELEPHONE / DATA CABLES	'CABSTRUT'	--

LEGEND:

SCHEDULE OF FIRE ALARM PANEL & COMPONENTS				
ITEM	SYMBOL	DESCRIPTION	MAKE	QTY.
1		INTELLIGENT ADDRESSABLE FIRE ALARM PANEL- 2 LOOP, WITH NETWORK CARD WITH 72 HOURS BATTERY BACK-UP	EATON (COOPER) FIRE SYSTEMS-CF1200NC	02 NOS.
2		INTELLIGENT ADDRESSABLE FIRE ALARM PANEL- 2 LOOP, WITH NETWORK CARD WITH 72 HOURS BATTERY BACK-UP	EATON (COOPER) FIRE SYSTEMS-CF1100NC	--
3		INTERLUIGENT ADDRESSABLE - MANUAL FIRE ALARM BREAK GLASS UNIT	EATON (COOPER) FIRE COPBGU-S	25 NOS.
4		INTELLIGENT ADDRESSABLE- FIRE ALARM -WALL SOUNDER	EATON (COOPER) FIRE COPWS	23 NOS.
5		INTELLIGENT ADDRESSABLE- FIRE ALARM -WALL SOUNDER IP 65 (WEATHERPROOF TYPE)	EATON (COOPER) FIRE COPWS-WP	07 NOS.
6		INTELLIGENT ADDRESSABLE- LOOP CONNECTED LED BEACON IP 65 (WEATHERPROOF TYPE)	EATON (COOPER) FIRE	01 NO.
7		INTELLIGENT ADDRESSABLE OPTICAL SMOKE DETECTOR	EATON (COOPER) FIRE COPP420	312 NOS.
8		INTELLIGENT ADDRESSABLE OPTICAL HEAD DETECTOR	EATON (COOPER) FIRE COPH430	--
9		"FIRE RETARDANT" CABLE- MIN. 2.5MM SQ FOR WIRING TO ALL FIRE EQUIPMENT IN 25MM CONDUIT AT HIGH LEVEL	REPUTED	3600 MTR

- GENERAL NOTES
- THIS DRAWING IS TO BE READ IN CONJUNCTION WITH ALL RELEVANT ARCHITECTS' AND ENGINEERS' DRAWINGS
- COPYRIGHT IS RESERVED. THIS DRAWING IS A LEGAL DOCUMENT INCLUDING ALL INFORMATION ATTACHED HEREWITH. UNLESS PERMITTED ALL INFORMATION SHALL BIND TO DH ENGINEERING CONSULTANTS LTD'S AUTHORITY.
 - THIS DRAWING IS TO BE READ IN CONJUNCTION WITH ALL RELEVANT ARCHITECTS' AND ENGINEER'S DRAWINGS.
 - ALL MATERIALS AND WORKMANSHIP TO BE TESTED AND APPROVED BY THE ENGINEERS IN COMPLIANCE WITH THE REGULATIONS BEFORE EXECUTION ON SITE. ANY QUERIES AND DISCREPANCIES TO BE REFERRED TO THE ENGINEER.
 - ALL CABLE TRAYS TO BE INSTALLED IN CEILING SPACE SHOULD HAVE STANDARD ACCESSORIES & MOUNTING BRACKETS (SPACING NOT MORE THAN 1.5 METER)
 - FOR FIRE CABLE CONNECTING SMOKE DETECTORS & FIRE ALARM BELL, BREAK GLASS IN 25mm PVC CONDUITS TO RUN IN CEILING SPACE
 - FIRE ALARM BELL TO BE MOUNTED AT 2200mm AFFL & FIRE ALARM BREAK GLASS TO BE MOUNTED AT 1400mm AFFL
 - FOR FIRE CABLE CONNECTING SMOKE DETECTORS & FIRE ALARM BELL, BREAK GLASS IN 25mm PVC CONDUITS TO RUN IN CEILING SPACE. FIRE CABLES TO BE "FLAME RETARDANT"- CF2 CROB

REVISION NOTES

NO.	DESCRIPTION

DH ENGINEERING CONSULTANTS
 CONSULTING ENGINEERS AND PROJECT MANAGERS
 P.O. BOX 37928, TEL: +260 211 227176, FAX: 229555
 CELL: +260 977 874162/+260 955 913315/+260 962 220542
 Email: dheng_lusaka@gmail.com
 LUSAKA ZAMBIA

CLIENT

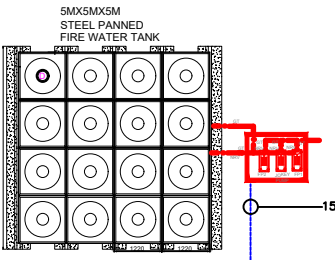
PROJECT
 PROPOSED FIRE SPRINKLER SYSTEM AT MEDICAL STORES LTD EXISTING WAREHOUSES ON MUKWA ROAD, LUSAKA.

DESCRIPTION
 WAREHOUSES- FLOOR PLAN: PROPOSED FIRE ALARM RETICULATION RETICULATION LAYOUT.

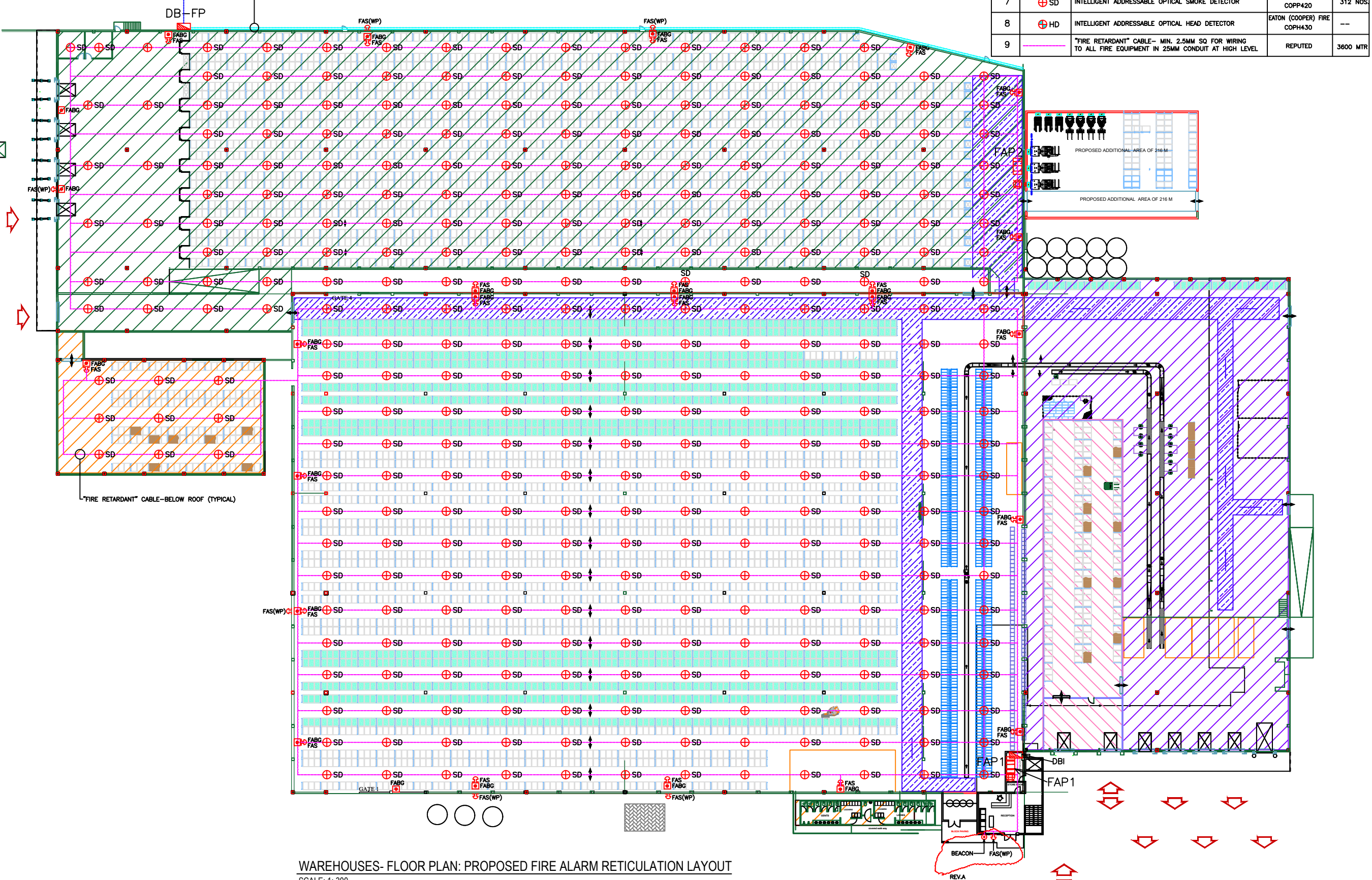
DATE	AUGUST 2020	APPROVED BY	D.G.H
DESIGNED BY	Y.N.S	SCALE	1: 300
DWG NO.	DH27-2020-E01		

CONSULTANT PROJECT No.	DISPLINE	STATUS	REVISION
	ELECT	S	A

DRAWING STATUS CODES
 R - REPORT T - TENDER C - CONSTRUCTION
 P - PRELIMINARY S - SUBMISSION A - AS BUILT



152x38mm Height MEDIUM DUTY PERFORATED CABLE TRAY C/W MOUNTING BRACKET & ACCESSORIES FOR ELECTRICAL CABLE AT HIGH LEVEL



WAREHOUSES- FLOOR PLAN: PROPOSED FIRE ALARM RETICULATION LAYOUT
 SCALE: 1: 300