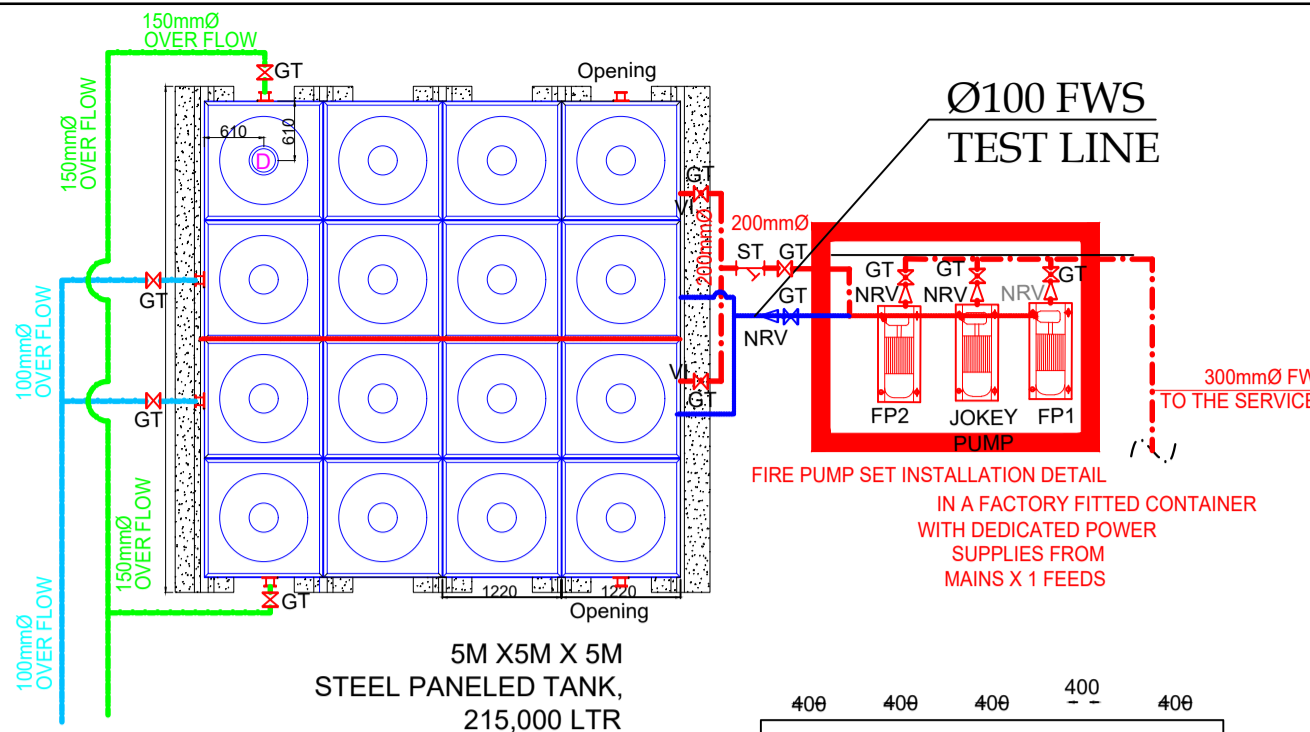
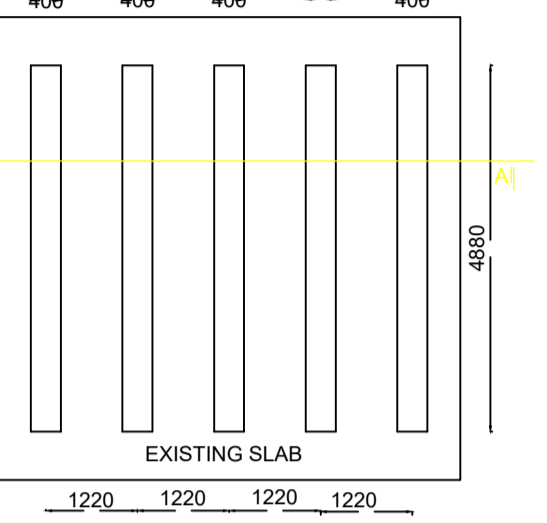
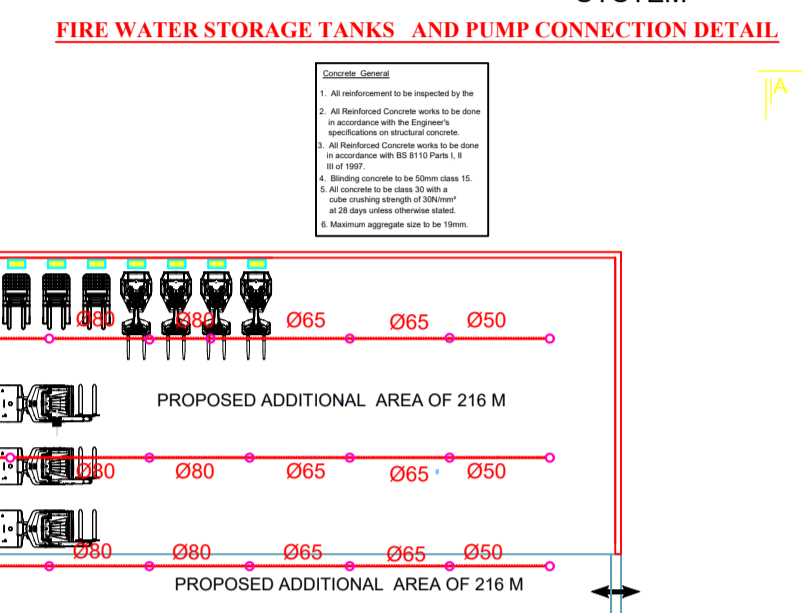
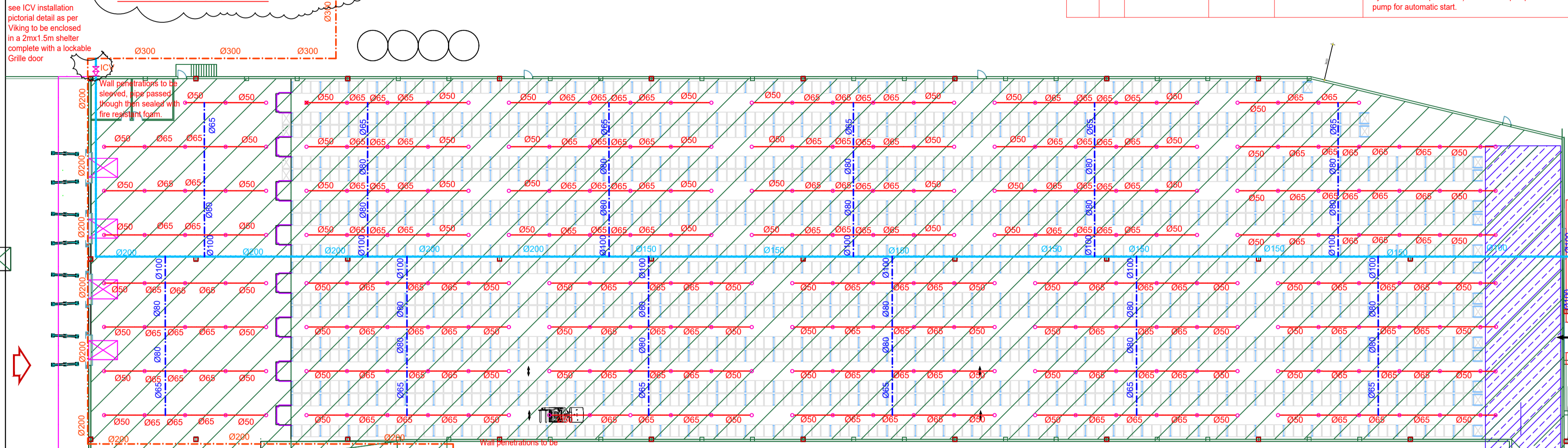


CONTAINERIZED FIRE PUMP SETS SPECIFICATION					
Ref	Qty	Type	Capacity	Electrics	Notes
Fire Fighting Pump Set	1	DAVRON Containerised Pump Set or Approved equivalent	Nominal output 2900 l/m @100 m HD	1775.0 KW, 3PHASE (50Hz/ 380V (Electric pump)) complete installed 1*66 KW, 3PHASE (Diesel) all 1*11 KW, 3PHASE (50Hz/ 380V JOCKEY PUMP	1. SUPPLY COMPLETE WITH: 2 pumps (main/standby) with horizontal base frame - as per Davron - with spacer coupling, electric motor and multistage vertical electric jockey pump, diaphragm pressure vessel (capacity: 20 l) and one switch cabinet per pump, fixed to a robust support structure. Two models fire pumps for the electric motors as supplied by Davron, both equipped with Smart Controller, plus model as supplied by Davron for the jockey pump, solid construction made of special profiled parts with cut-outs for forklift trucks and hooks to ensure trouble-free, safe transportation. High-adjustable bracket for the outlet manifold, special base plate which reduces the transfer of vibrations considerably and increases the reliability and service life. A circuit with dual pressure switch, pressure gauge, non-return valve, valve (secured from use by unauthorised personnel) for the main pump and standby pump for automatic start.



- GENERAL NOTES**  
THIS DRAWING IS TO BE READ IN CONJUNCTION WITH ALL RELEVANT ARCHITECTS' AND ENGINEERS' DRAWINGS
- USE ONLY APPROVED MILD STEEL FITTINGS.
  - ALL VALVES TO BE FIRE RATED GATE VALVES.
  - ALL EXTERNAL UNDERGROUND PIPES TO BE SCHED 40 MILD STEEL WRAPPED IN DENSO TAPE.
  - ALL EXTERNAL ABOVE GROUND PIPES TO BE SCHED 40 MILD STEEL WITH WELDED JOINTS.
  - ALL INTERNAL FIRE PIPES TO BE SCHED 40 MILD STEEL WITH WELDED JOINTS.
  - PIPES PASSING UNDER ROADWAYS AND FOOT PATHS TO BE INSTALLED IN CONCRETE CASING.
  - UNDERGROUND PIPES TO BE A MINIMUM OF 600mm BELOW GROUND LEVEL AND MARKED FOR EASE OF MAINTENANCE IN FUTURE.
- LEGEND**
- PRV - PRESSURE REDUCING VALVE
  - IV - ISOLATION VALVE
  - NRV - NON RETURN VALVE
  - HPBV - HIGH PRESSURE BALL VALVE
  - CWS - COLD WATER SUPPLY
  - F/B - FROM BELOW
  - F/A - FROM ABOVE
  - T/B - TO BELOW
  - V.I - VORTEX INHIBITOR



SYMBOL	DISCUSSION
	FIRE SPRINKLER PIPE
	Ø15 / 68" sprinklers conventional
	DRAIN PIPE
	GATE VALVE
	PUMP
	STRAINER
	NON-RETURN VALVE (NRV)
	OS&Y GATE VALVE
	BUTTERFLY VALVE
	DRAIN & TEST VALVE
	PRESSURE GAUGE
	FLOW SWITCH
	AUTOMATIC AIR VENT(AAV)

- Concrete General**
- All reinforcement to be inspected by the
  - All Reinforced Concrete works to be done in accordance with the Engineer's specifications on structural concrete.
  - All Reinforced Concrete works to be done in accordance with BS 8110 Parts I, II III of 1997.
  - Blinding concrete to be 50mm class 15.
  - All concrete to be class 30 with a cube crushing strength of 30N/mm<sup>2</sup> at 28 days unless otherwise stated.
  - Maximum aggregate size to be 19mm.

- General Notes**
- The contractor is responsible for ensuring that all materials and workmanship conform with the details and specifications shown on this drawing, and all relevant code specifications, irrespective of whether the engineer has inspected the works on site or not.
  - All dimensions and levels to be checked on site and correlated with the engineer's drawings before construction commences.

**REVISION NOTES**

NO.	DESCRIPTION	DATE
A	WALL PENETRATION NOTES FOR THE FIRE PIPES ADDED TO THE DRAWING.	10/20
	FIRE WATER TANK BASE DETAIL ADDED TO THE DRAWINGS.	

**DH ENGINEERING CONSULTANTS**  
CONSULTING ENGINEERS AND PROJECT MANAGERS  
P.O. BOX 37928, TEL: +260 211 227176, FAX: 229555  
CELL: +260 977 874162/+260 955 913315/+260 962 220542  
Email: dhec.lusaka@gmail.com

LUSAKA ZAMBIA

**MSL**  
MILITARY SERVICES LIMITED

**PROPOSED FIRE SPRINKLER SYSTEM AT MSL EXISTING WAREHOUSE LUSAKA.**

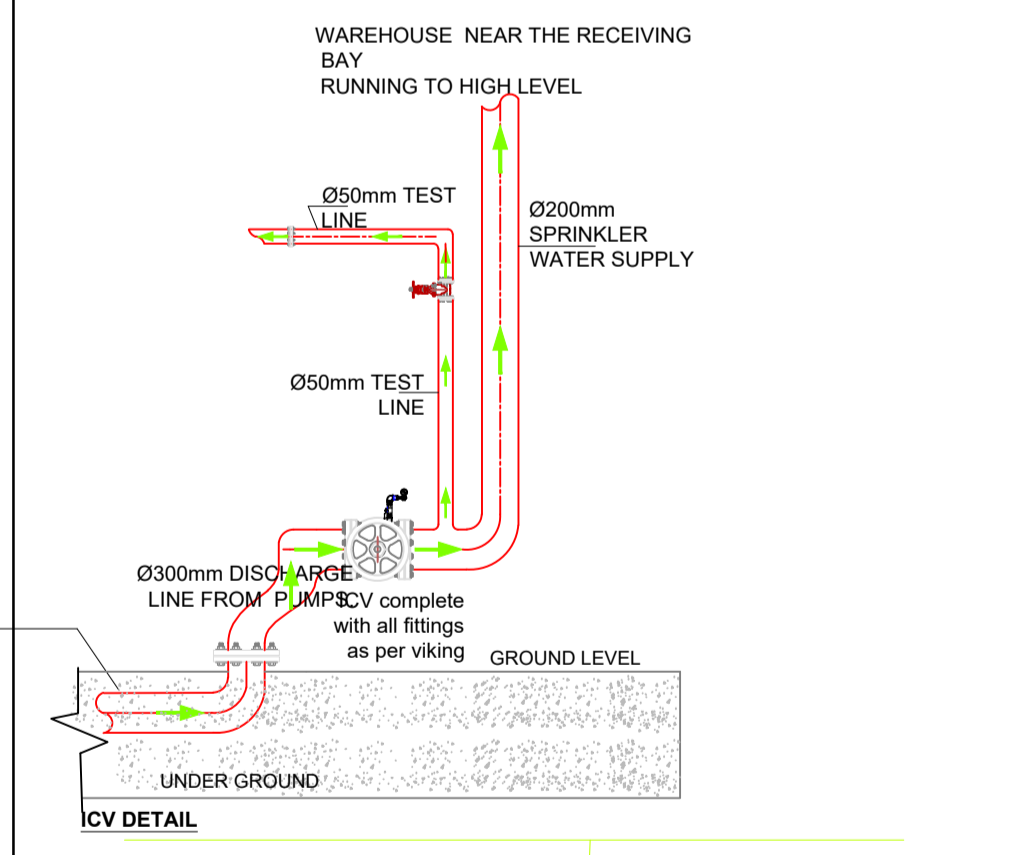
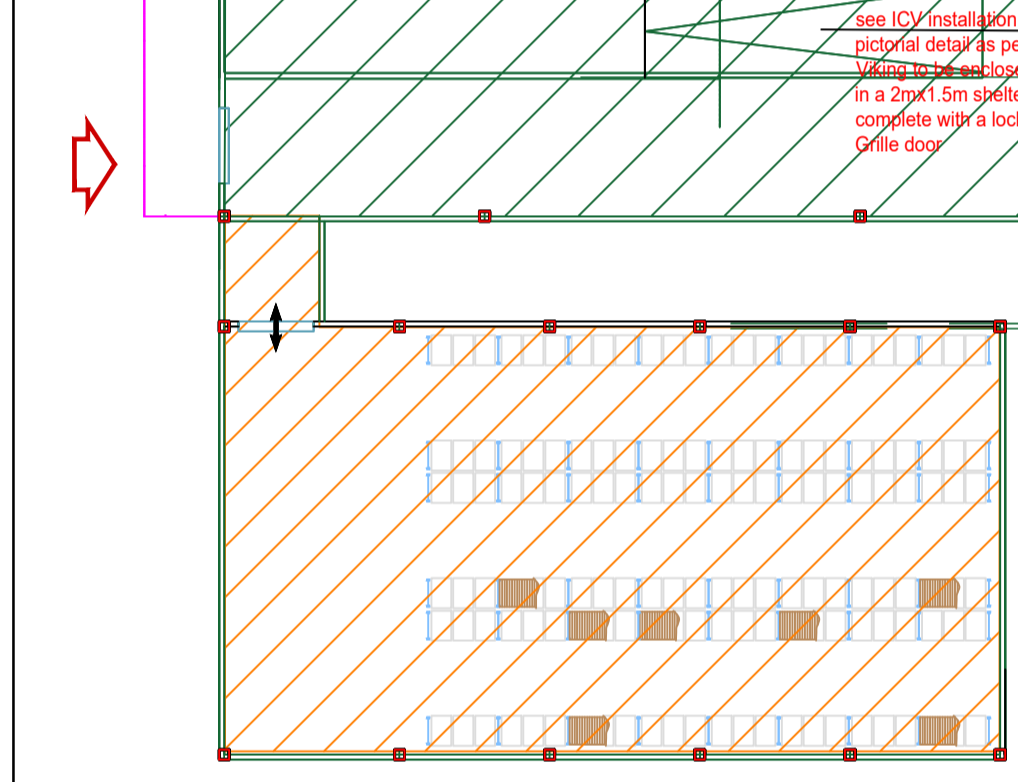
**PROPOSED FIRE SPRINKLER RETICULATION LAYOUT.**

DATE	AUGUST 2020	APPROVED BY	D.G.H
DESIGNED BY	AS	SCALE	1 : 300
DWG NO.	DH27-2020-M01(A)		

CONSULTANT PROJECT No.	DISPLINE	STATUS	REVISION
	MECH	P	

**DRAWING STATUS CODES**

R - REPORT	T - TENDER	C - CONSTRUCTION
P - PRELIMINARY	S - SUBMISSION	A - AS BUILT



- ICV CHAMBER LIST OF FITTINGS**
- Viking butterfly monitoring valve
  - Viking alarm valve
  - Potter flow valve
  - Gong alarm
  - strainers
  - Viking pressure gauges

